



Cambia

BY NFP™

INSTALLATION GUIDE

SIDING

WARNING

Failure to follow the installation instructions will void the warranty.

GENERAL INFORMATION

Make any openings watertight according to the air barrier type you have chosen. Please refer to the manufacturer's recommendations.

Although the wood you have received has been heat dried to less than 3% humidity, it is possible to see a rise of humidity on the walls exposed to the rain. This causes a normal swelling of the planks in both width and length. However, this movement is absorbed by the nesting of the planks and the 45° cuts.

Protect your investment. Don't let the siding be needlessly exposed to bad weather, which could amplify any swelling.

Never let the siding be in contact with the ground. A minimum distance of 6" is required.

Never place the siding in direct contact with the roof. A minimum distance of 2" is recommended.

Never let the siding be in direct contact with an insulating material. An air space must be present between the wall and the facing.

As wood can show variations in color, it is the installer's responsibility to distribute the planks in such a way as to make any color differences attractive.

PRIOR TO
INSTALLATION



DURING
INSTALLATION



INSTALLATION GUIDE

INSTALLATION

STORAGE

The siding must be protected from bad weather. Use the canvas cover provided with the material for protection. If possible, store the siding indoors. Spread a plastic sheet on the ground and lay the siding on 3 sturdy wood blocks to keep the wood away from the floor and also to distribute load evenly.

Rain Screen (see figures A and B)

Mandatory for all siding patterns:

Recommended rain screen air space of $\frac{3}{4}$ " with $\frac{1}{2}$ " being the minimum is required by the lathing process.

Lath dimension:

1" x 3"

Make sure you have good quality laths.

Eliminate the splits and knot holes, as well as any decay.

Spacing between laths:

For horizontal and vertical installation of siding:

16" (from center to center)

For diagonal installation of siding:

12" (from center to center).

The laths in this case must be perpendicular to the surface.

NAILING vertical or horizontal (see figures A and B)

We recommend Bostitch or Benco Stainless Steel Fasteners and Crackless Screws By Universal Fastener Outsourcing, LLC

Shiplap Plank (Figure A)

Two nails per plank, 16" apart.

The first nail should be between $\frac{3}{4}$ " and 1" from the basis of the plank and the second at 2 $\frac{1}{2}$ " of the top plank.

TnG Plank (Figure B)

One nail every 16", located between

$\frac{3}{4}$ " and 1" from the plank basis.

The nail must penetrate the center of the lath.

Figure A (Shiplap)

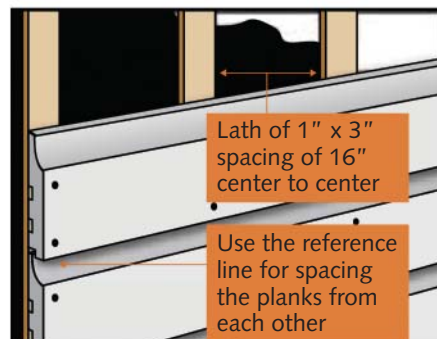
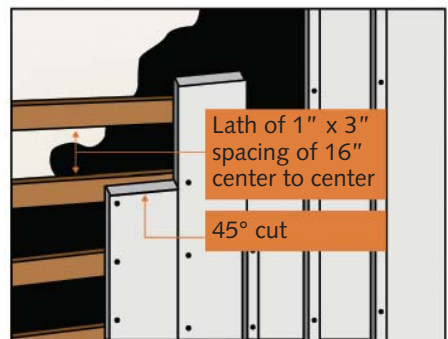


Figure B (TnG)

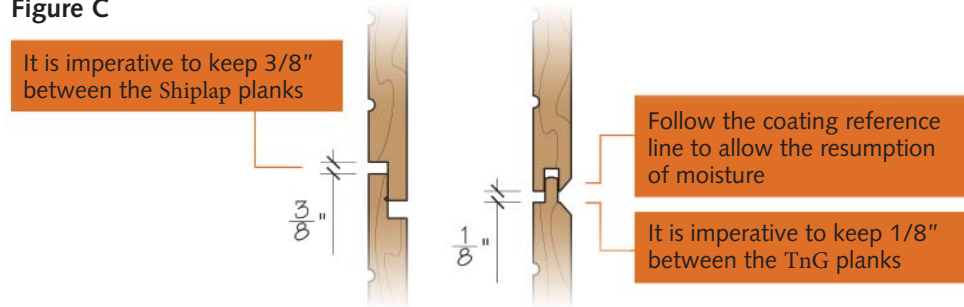


SIDING

SPACING between planks (see figure C)

Spacing is required. Do not tighten the planks to each other. You must follow the siding reference line to allow the right plank spacing in order to ensure the resumption of moisture. If there is no reference line, you must leave a space at the tip of the planks of a minimum of 1/8" for the TnG siding and of 3/8" for the Shiplap siding.

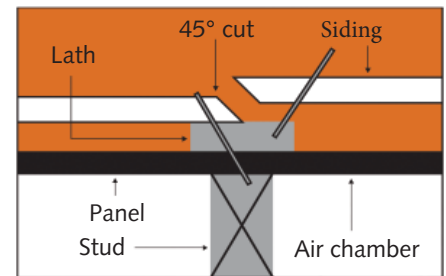
Figure C



JOINTS (see figure D)

Whenever a joint is required, cut the planks to be jointed at a 45° angle. Joints must be placed face to face to a lath. Alternating the lengths is mandatory to avoid withdrawals or swelling in the length track. Planks of 4', 6', 8' and 10' shall be inserted between planks of 12', 14' and 16'. Never install two planks of 12', 14' or 16' end to end. If sealing or coating the project then all cuts should be sealed or coated with your protection product. Use a sealer or coating for the windows contour, doors and siding/moulding contact zones. The sealer or coating must be applied on contact areas to the surface of the siding.

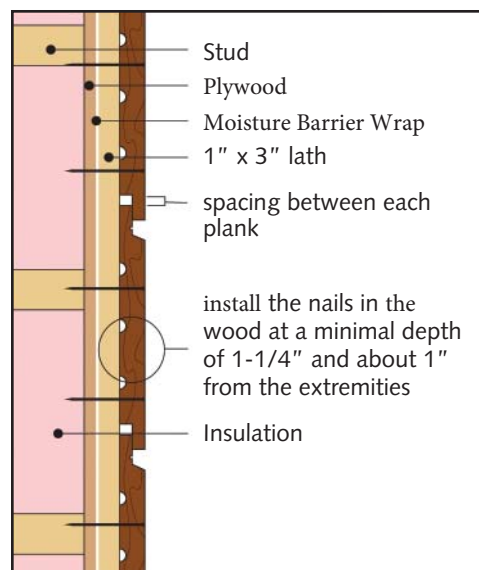
Figure D



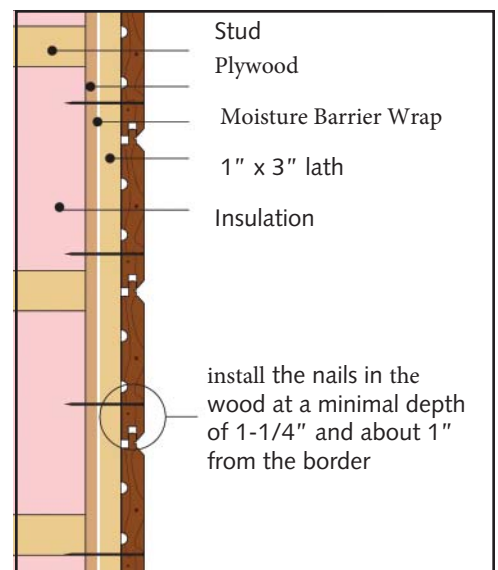
ALIGNMENT

A variation of $\pm 1/8"$ between the planks in the width direction is considered normal. Therefore, if a perfect horizontal alignment is required at the meeting point of two or more walls, you will then have to plane the top of the plank.

Cambia Shiplap Profile



Cambia T&G Profile





INSTALLATION (continued)

MOULDINGS

Use 2 nails each 16", one on each side of the moulding. Nail between 3/4" and 1" from the edge.

IMPORTANT NOTES

Scratches and other minor damages occurring during the installation will have to be sanded by the worker with sandpaper.

Failure to comply with the installation instructions will void the warranty.

Contact:

Cambia by NFP
PO Box 369
Kingston, NH 03848

1-603-642-3665

info@cambiawood.com
www.cambiawood.com

Cambia

By NFP TM

cambiawood.com